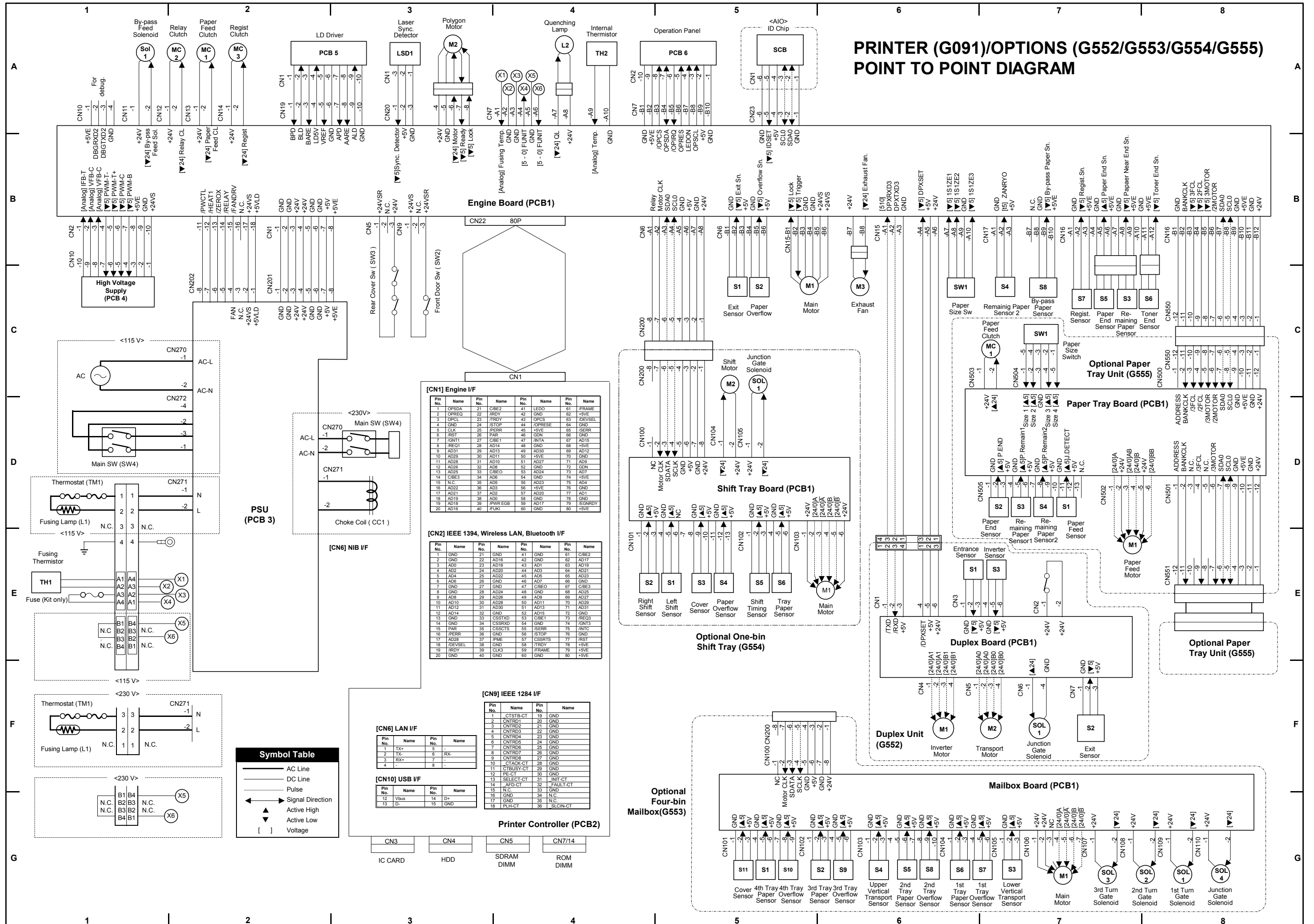


PRINTER (G091)/OPTIONS (G552/G553/G554/G555) POINT TO POINT DIAGRAM



[CN1] Engine I/F

Pin No.	Name	Pin No.	Name	Pin No.	Name	Pin No.	Name
1	OPSDA	21	CBE2	41	LEDO	61	FRAME
2	OPREQ	22	IRDY	42	GND	62	+5VE
3	OPCL	23	TRDY	43	OPCS	63	DESSEL
4	GND	24	STOP	44	OPRESE	64	GND
5	CLK	25	IPERR	45	+5VE	65	ISERR
6	IRST	26	PAR	46	IGN	66	GND
7	SR11	27	CSET	47	INTA	67	AD15
8	REG1	28	AD14	48	GND	68	+5VE
9	AD31	29	AD13	49	AD30	69	AD12
10	AD39	30	AD11	50	+5VE	70	GND
11	AD28	31	AD10	51	AD27	71	AD9
12	AD26	32	AD8	52	GND	72	GDN
13	AD25	33	CBE0	53	AD34	73	AD7
14	CBE3	34	AD6	54	GND	74	+5VE
15	N.C.	35	AD5	55	AD23	75	AD4
16	AD22	36	AD3	56	+5VE	76	GND
17	AD21	37	AD2	57	AD20	77	AD1
18	AD19	38	AD0	58	GND	78	GND
19	AD18	39	IPWR	59	AD17	79	REGRDY
20	AD16	40	FLUKI	60	GND	80	+5VE

[CN2] IEEE 1394, Wireless LAN, Bluetooth I/F

Pin No.	Name	Pin No.	Name	Pin No.	Name	Pin No.	Name
1	GND	21	GND	41	GND	61	CBE2
2	GND	22	AD18	42	GND	62	AD17
3	AD0	23	AD19	43	AD1	63	AD19
4	AD2	24	AD20	44	AD3	64	AD21
5	AD4	25	AD22	45	AD5	65	AD23
6	AD6	26	GND	46	AD7	66	GND
7	GND	27	GND	47	CBE0	67	CBE3
8	GND	28	AD24	48	GND	68	AD25
9	AD8	29	AD26	49	AD9	69	AD27
10	AD10	30	AD28	50	AD11	70	AD29
11	AD12	31	AD30	51	AD13	71	AD31
12	AD14	32	GND	52	AD15	72	GND
13	GND	33	CSS7XD	53	CBE1	73	REG03
14	GND	34	CSSRXP	54	GND	74	GN15
15	PAR	35	CSSSCTS	55	ISERR	75	INTC
16	IPERR	36	GND	56	STOP	76	GND
17	AD28	37	IPME	57	CSSRTS	77	IRST
18	DEVEL	38	GND	58	TRDY	78	+5VE
19	IRDY	39	CLK3	59	FRAME	79	+5VE
20	GND	40	GND	60	GND	80	+5VE

[CN9] IEEE 1284 I/F

Pin No.	Name	Pin No.	Name
1	CTSTB-CT	19	GND
2	CNTRD1	20	GND
3	CNTRD2	21	GND
4	CNTRD3	22	GND
5	CNTRD4	23	GND
6	CNTRD5	24	GND
7	CNTRD6	25	GND
8	CNTRD7	26	GND
9	CNTRD8	27	GND
10	CTACK-CT	28	GND
11	CTBUSY-CT	29	GND
12	PE-CT	30	GND
13	SELECT-CT	31	INIT-CT
14	AFD-CT	32	FAULT-CT
15	N.C.	33	GND
16	GND	34	N.C.
17	GND	35	N.C.
18	PLH-CT	36	SLLCN-CT

[CN6] LAN I/F

Pin No.	Name	Pin No.	Name
1	Tx+	5	-
2	Tx-	6	Rx-
3	Rx+	7	-
4	-	8	-

[CN10] USB I/F

Pin No.	Name	Pin No.	Name
1	Vbus	14	D+
2	D-	15	GND

Symbol Table

- AC Line
- DC Line
- Pulse
- Signal Direction
- ▲ Active High
- ▼ Active Low
- [] Voltage

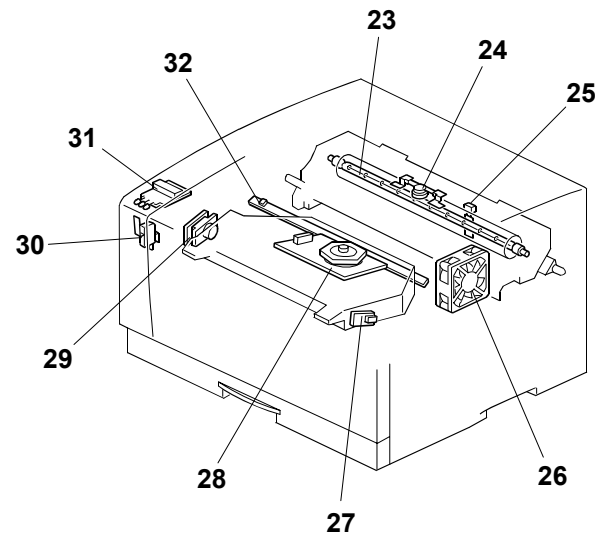
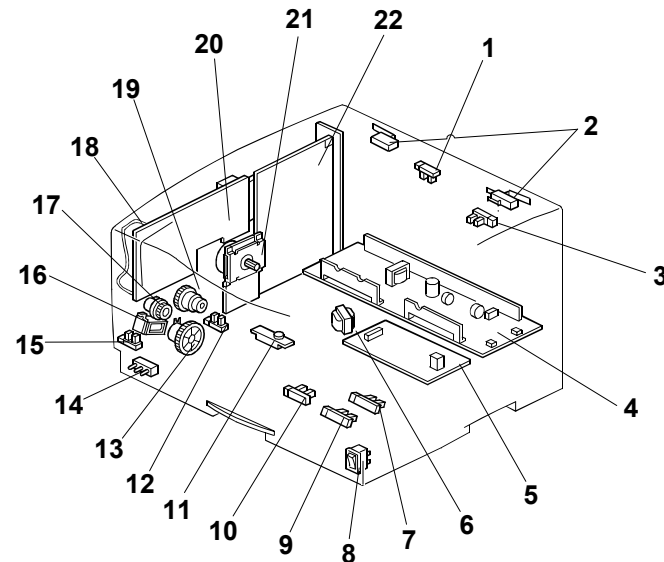
Printer Controller (PCB2)

IC CARD	HDD	SDRAM DIMM	ROM DIMM
CN3	CN4	CN5	CN7/14

PRINTER (G091)/OPTIONS (G552/G553/G554/G555) ELECTRICAL COMPONENT LAYOUT

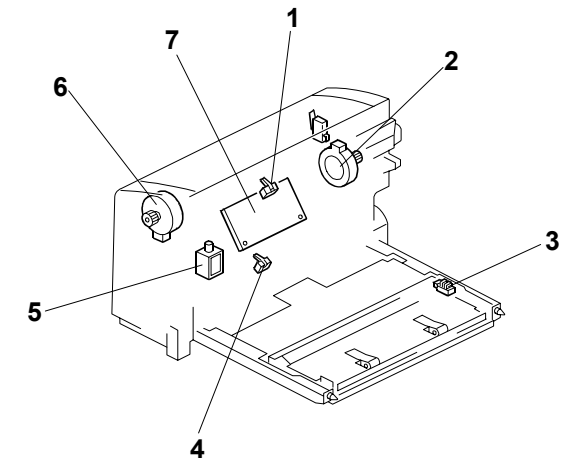
Printer (G091)

Symbol	Name	Index No.	P to P
Motors			
M1	Main	21	C5
M2	Polygonal Mirror	28	A3
M3	Exhaust Fan	26	C6
Magnetic Clutches			
MC1	Paper Feed	13	A2
MC2	Relay	17	A2
MC3	Registration	19	A2
Switches			
SW1	Paper Size	14	C6
SW2	Front Cover	30	C3
SW3	Rear Cover	2	C3
SW4	Main	8	C3, D1
Sensors			
S1	Paper Exit	1	C5
S2	Paper Overflow	3	C6
S3, S4	Remaining Paper	7, 9	C7
S5	Paper End	10	C7
S6	Toner End	11	C8
S7	Registration	12	C7
S8	By-pass paper	15	C7
PCBs			
PCB1	Engine	20	B4
PCB2	Printer controller	22	G4
PCB3	PSU (Power Supply Unit)	4	D2
PCB4	High Voltage Supply	5	C1
PCB5	LDD (Laser Diode Driver)	29	A3
PCB6	Operation Panel	31	A5
Solenoids			
Sol1	By-pass feed	16	A1
Lamps			
L1	Fusing	23	D1, F1
L2	Quenching	32	A4
Others			
TM1	Thermostat	24	D1, F1
TH1	Fusing Thermistor	25	E1
TH2	Internal Thermistor	18	A4
LSD1	Laser Synchronization Detector	27	A3
CC1	Choke Coil (230V machine only)	6	D3



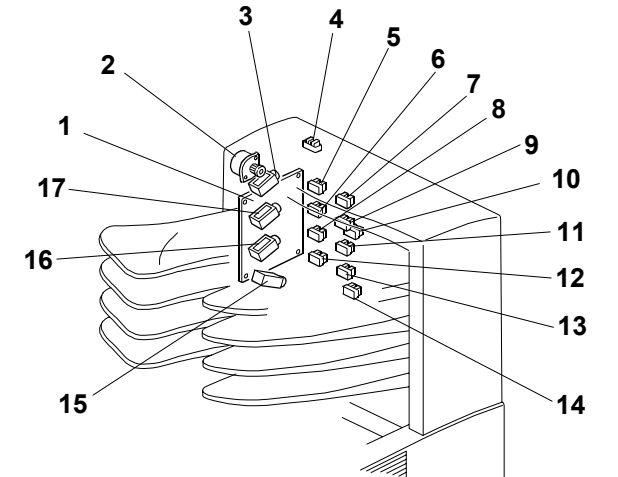
Duplex Unit (G552)

Symbol	Name	Index No.	P to P
Motors			
M1	Inverter	6	F6
M2	Transport	2	F7
Sensors			
S1	Entrance	1	E7
S2	Exit	3	F7
S3	Inverter	4	E7
Solenoids			
SOL1	Inverter gate	5	F7
PCBs			
PCB1	Duplex board	7	E7



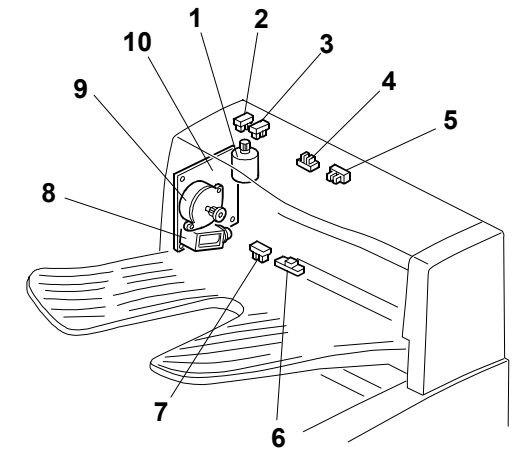
Four-bin Mailbox (G553)

Symbols	Name	Index No.	P to P
Motors			
M1	Main	2	G7
Sensors			
S1	4th tray Paper	5	G5
S2	3rd tray Paper	6	G6
S3	Lower vertical transport	14	G7
S4	Upper vertical transport	10	G6
S5	2nd tray paper	8	G6
S6	1st tray paper	12	G6
S7	1st tray overflow	13	G7
S8	2nd tray overflow	11	G6
S9	3rd tray overflow	9	G6
S10	4th tray Overflow	7	G5
S11	Cover	4	G5
Solenoids			
SOL1	1st turn gate solenoid	16	G8
SOL2	2nd turn gate solenoid	17	G8
SOL3	3rd turn gate solenoid	3	G7
SOL4	Junction gate solenoid	15	G8
PCBs			
PCB1	Mailbox board	1	G7



One-bin Shift Tray (G554)

Symbols	Name	Index No.	P to P
Motors			
M1	Main	9	E6
M2	Shift	1	C5
Sensors			
S1	Left shift	2	E5
S2	Right shift	3	E4
S3	Upper cover	4	E5
S4	Paper overflow	5	E5
S5	Shift timing	6	E5
S6	Tray paper	7	E5
Solenoids			
SOL1	Junction gate solenoid	8	C6
PCBs			
PCB1	Shift tray board	10	D5



Paper Tray Unit (G555)

Symbol	Name	Index No.	P to P
Motor			
M1	Paper feed motor	6	E7
Sensors			
S1	Paper feed sensor	5	D7
S2	Paper end sensor	2	D7
S3, S4	Remaining paper	3, 4	D7
Switch			
SW1	Paper size switch	7	C7
Clutch			
MC1	Paper feed clutch	8	C7
PCB			
PCB1	Paper tray board	1	D7

